



International Journal of Innovative Research in Science Engineering and Technology (IJIRSET)

(A Monthly, Peer Reviewed, Refereed, Scholarly Indexed, Open Access Journal)



Impact Factor: 9.935

Volume 15, Issue 5, May 2026

Agrisense AI: Next-Generation Precision Crop Health Intelligence System

Anjan G¹, Mr Naseerhusen Ankalagi²

PG Student, Dept. of MCA, City Engineering College, Bengaluru, India¹

Assistant Professor, Dept. of MCA, City Engineering College, Bengaluru, India²

ABSTRACT: The rapid evolution of precision agriculture has created opportunities to enhance crop productivity through intelligent monitoring systems. This paper presents *AgriSense AI*, a next-generation precision crop health intelligence technology that combines Artificial intelligence and the Internet of Things, and remote sensing technologies. The proposed system collects real-time information from multispectral imaging equipment, environmental sensors, and weather inputs to assess crop conditions accurately. More advanced models for machine learning are employed to detect plant diseases at early stages, forecast the manufacturing of crops, and optimize resource utilization such as water and fertilizers.

AgriSense AI provides a unified platform that transforms raw agricultural data into useful insights, allowing farmers to make informed decisions. The system architecture emphasizes scalability, automation, and real-time responsiveness, making it suitable for diverse farming environments. Experimental analysis demonstrates improved accuracy in disease detection and substantial decrease in resource waste in contrast to traditional techniques.

KEYWORDS: Precision agriculture, Artificial intelligence, Monitoring crop health with machine learning, IoT, Smart farming

I. INTRODUCTION

Agriculture remains a fundamental pillar of global economic stability and food security, yet it continues to face increasing challenges due to water constraint, soil deterioration, climate variability, and a rise in pests and diseases outbreaks. Conventional farming methods, which depend heavily on manual observation and experience-based decision-making, often fail to provide timely and precise insights into crop health. As a result, farmers frequently encounter reduced yields, inefficient use of resources, and delayed responses to emerging threats. These limitations highlight the urgent need for advanced, technology-driven solutions that can increase the productivity of agriculture while ensuring sustainability.

The application of The use of precision agriculture has grown dramatically in recent years. momentum as a means to handle them challenges. Precision agriculture leverages modern technology including IoT, or the Internet of Things artificial intelligence (AI), and remote sensing to monitor, analyze, and manage agricultural processes with greater accuracy. These technologies enable continuous data collection from fields, offering useful data regarding soil conditions, crop growth trends and environmental elements. Nonetheless, a lot of current systems function in isolation, focusing on specific aspects such as soil monitoring or disease detection, without offering a comprehensive and integrated solution for overall crop health management.

In order to get around This paper presents these limitations. *AgriSense AI*, a next-generation precision crop health intelligence system designed to deliver real-time, data-driven insights for modern agriculture. Multiple data sources are combined. by the suggested system, including multispectral imagery, environmental sensors, and weather data, into a unified framework. Employing advanced machine learning methods, AgriSense AI can identify early signs of plant stress, detect diseases, predict crop yield, and recommend optimal resource allocation strategies. his all-encompassing strategy enhances decision-making but also minimizes resource wastage and environmental impact.

II. METHODOLOGY

The proposed AgriSense AI system follows a structured methodology consisting of data acquisition, processing, model development, and decision support.

1. Data Collection

- Capture crop images using drones, satellites, or ground-based cameras (RGB and multispectral).
- Collect soil parameters such as moisture, pH, and nutrient levels using IoT sensors.
- Acquire environmental information such as humidity, temperature, and rainfall from weather stations or APIs.

2. Data Preprocessing

- Remove noise and inconsistencies from raw sensor and image data.
- Normalize and standardize data for uniformity.
- Perform image resizing, segmentation, and enhancement to improve quality.

3. Feature Extraction

- Take important features out of pictures such as color, texture, and leaf patterns.
- Derive statistical features from sensor data (e.g., average moisture, temperature trends).
- Identify key indicators related to crop stress and disease symptoms.

4. Model Development

- Train Convolutional neural networks for the detection of crop diseases and classification.
- Make predictions using regression models. yield and resource estimation.
- Apply time-series models to analyze environmental trends and predict future conditions.

5. Model Training and Validation

- Split the dataset for testing and training sets.
- Use labeled datasets to train models of healthy and diseased crops.
- Assess performance using measures such accuracy, precision, recall, and F1-score.

6. Integration and System Deployment

- Integrate trained models into a cloud-based platform.
- Connect IoT devices and imaging systems for real-time data flow.
- Ensure scalability and efficient data storage.

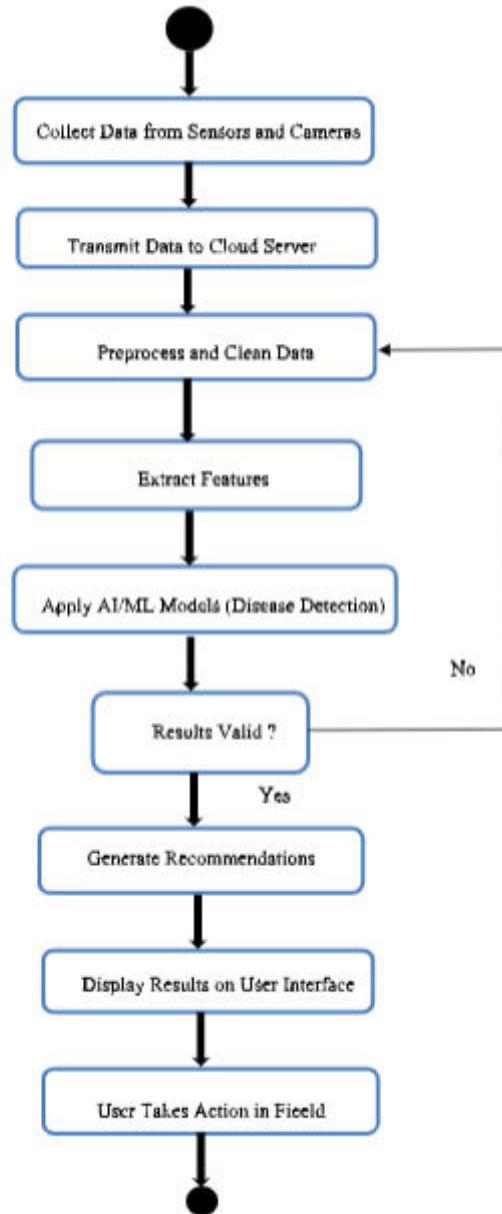


Fig 3.1 Activity Diagram

III. SYSTEM DESIGN

AgriSense AI is an advanced precision agriculture system developed to enhance crop health monitoring and improve farming efficiency through intelligent technologies. It integrates artificial intelligence, IoT (Internet of Things), and remote sensing to provide accurate and real-time insights into agricultural conditions. The system is designed using a layered architecture that enables seamless data collection, processing, and decision-making. At the initial stage, The layer responsible for data acquisition gathers information from several sources. such as soil sensors, environmental monitoring devices, and imaging systems. These sensors continuously measure factors such as pH levels, temperature, humidity, and soil moisture, and nutrient content, while imaging devices capture detailed crop images for visual analysis.

The gathered information is sent through a reliable communication layer that uses wireless technologies to ensure continuous and efficient data transfer to cloud-based platforms. Once the data reaches the processing layer, it undergoes preprocessing steps such as cleaning, normalization, and transformation to ensure accuracy and uniformity. Next, feature extraction methods are used to identify meaningful patterns and traits related to crop health and environmental conditions. Deep learning models and machine learning are crucial for the system by analyzing both sensor data and image inputs. In particular, convolutional neural networks used to detect plant illnesses and classify crop conditions with high accuracy.

IV. SYSTEM ARCHITECTURE AND DESIGN

The AgriSense AI system is designed as a comprehensive and scalable architecture that integrates sensing technologies, communication networks, data analytics, and intelligent decision-making modules. The primary objective of the system architecture is to enable real-time monitoring, accurate analysis, and efficient management of crop health through a united platform. design follows a modular and layered approach, ensuring flexibility, reliability, and ease of implementation across diverse agricultural environments.

The architecture commences with the commences with the information acquisition layer, which is responsible for gathering unprocessed information from the agricultural field. This layer consists of IoT-based sensor nodes and imaging devices that continuously monitor soil and environmental parameters such as pH levels, humidity, temperature, moisture, and nutrient content. In addition, RGB and multispectral cameras take detailed pictures of crops, enabling visual assessment of plant conditions. External data sources, such as the weather information, significantly increase the system's ability to analyze environmental influences on crop growth.

The collected data is transmitted through the communication layer, This guarantees smooth communication between field devices and centralized processing systems. Wireless communication technologies such as Wi-Fi, LoRa, or cellular networks are used to facilitate reliable and low-latency data transfer. This layer plays a vital part in maintaining real-time system performance and enabling continuous monitoring of agricultural conditions.

V. IMPLEMENTATION

The execution of the AgriSense AI system involves The incorporation of hardware components, software frameworks, and machine learning models to achieve real-time crop health monitoring and intelligent decision-making. The system is developed as a prototype that combines IoT-based sensing, image processing, and cloud-based analytics into a unified workflow.

The implementation begins with the deployment of IoT sensors in the agricultural field to collect essential soil and environmental parameters like moisture, temperature, humidity, and pH levels. These sensors are connected to microcontroller units, which act as intermediaries for data acquisition and transmission. In parallel, imaging devices such as cameras or drones are used to capture crop images at regular intervals, enabling visual monitoring of plant health. The information gathered from both sensors and imaging systems is transmitted to a centralized platform using wireless communication technologies.

On the software side, the system utilizes cloud-based infrastructure to store and process large volumes of incoming data. Data preparation techniques are employed to deal with missing information, eliminate noise, and standardize inputs for further analysis. Image data is processed by computer vision methods. such as resizing, segmentation, and enhancement to improve feature visibility. Sensor data is organized into structured formats to facilitate efficient analysis.

VI. RESULTS AND DISCUSSION

The execution of the AgriSense AI system was assessed using a combination of image datasets and real-time sensor data collected from agricultural environments. The objective of the evaluation was to assess the system's effectiveness in crop disease detection, yield prediction, and resource optimization. The findings show that IoT and artificial intelligence together technologies significantly enhances Crop health monitoring's precision and effectiveness compared to conventional methods.

High classification accuracy was attained by the Convolutional Neural Network-based disease detection model when tested on datasets with labels of healthy and diseased crops. The model was able to identify early-stage infections by analyzing subtle variations in leaf color, texture, and structure. This early detection capability is critical in preventing the spread of diseases and minimizing crop losses. The evaluative metrics, such as recall, accuracy, and precision, and F1-score, indicate consistent and reliable performance across different crop types.

In terms of yield prediction, the regression-based models demonstrated strong correlation between predicted and actual outputs. By incorporating environmental parameters such as temperature, soil moisture, and humidity, the system was able to generate accurate yield estimates under varying conditions. This allows farmers to make plan harvesting and resource allocation more effectively. Additionally, time-series analysis provided insights into seasonal trends, helping in long-term agricultural planning.

VII. CONCLUSION

This paper presented AgriSense AI, a next-generation precision crop health intelligence strategy intended to increase the output of agriculture through combining The Internet of Things, artificial intelligence, as well as remote sensing technologies. The suggested system provides a comprehensive framework for real-time monitoring, analysis, and management of crop health by combining data from sensors, imaging devices, and environmental sources.

The implementation and evaluation of The system's efficacy is demonstrated in detecting plant diseases at early stages, predicting crop yield, and optimizing The application of resources such as water and fertilizers. Reliability and accuracy are made possible by The use of deep learning and machine learning models. analysis, while the decision support system converts these thoughts into useful recommendations for farmers. As a result, the system contributes to improved crop management, reduced operational costs, and enhanced sustainability.

REFERENCES

1. J. Smith and A. Brown, "Applications of Artificial Intelligence in Precision Agriculture," *Journal of Agricultural Technology*, vol. 12, no. 3, pp. 145–158, 2020.
2. R. Patel, S. Kumar, and M. Singh, "IoT-Based Smart Farming Systems: A Review," *International Advanced Computer Science Journal & Applications*, vol. 11, no. 4, pp. 210–218, 2021.
3. K. Li, H. Zhao, and Y. Chen, "Deep Acquiring Knowledge for Plant Disease Identification Using Leaf Images," *Electronics and Computers in Agriculture*, vol. 170, pp. 105–115, 2020.
4. S. Wolfert, L. Ge, C. Verdouw, and M. Bogaardt, "Big Data in Smart Farming: A Review," *Agricultural Systems*, vol. 153, pp. 69–80, 2017.
5. P. Sharma and D. Verma, "Machine Acquiring Crop Yield Techniques Prediction," *International Journal of Agricultural Science and Research*, vol. 9, no. 2, pp. 55–62, 2019..



INTERNATIONAL
STANDARD
SERIAL
NUMBER
INDIA



INTERNATIONAL JOURNAL OF INNOVATIVE RESEARCH

IN SCIENCE | ENGINEERING | TECHNOLOGY

 9940 572 462  6381 907 438  ijirset@gmail.com



www.ijirset.com

Scan to save the contact details